

SUBJECT 2

Re: Cloth, Dry Goods, Fabrics or Textiles Group

Contact: Joel L. Ringer Telephone — (703) 838-1826 ringer@nmfta.org

Proponent: Freight Classification Development Council

Present Classification Provisions

Item	Description	Class
48920	CLOTH, DRY GOODS, FABRICS OR TEXTILES GROUP: see Note, item 48921	
48921	NOTE—Except when otherwise indicated, provisions subject to this grouping will not apply to cloth, dry goods, fabrics or textiles which require temperature control during transit.	
48970	Bagging or Cloth, burlap, gunny, ixtle (istle), jute or sisal, decorated, dyed NOI, printed or surface coated, in packages	85
48980	Bagging or Cloth, burlap, gunny, ixtle (istle), jute or sisal, dyed not more than one color, rolled, in packages	60
49010	Bagging or Cloth, burlap, gunny, ixtle (istle), jute or sisal, NOI, with or without paper or plastic film lining, in packages, subject to Item 170 and having a density in pounds per cubic foot of:	
Sub 1	Less than 20	65
Sub 2	20 or greater	55
49050	Bottoms, canvas, in bales, boxes or bundles:	
Sub 1	Berth or bunk	100
Sub 2	Cot or litter	85
49080	Buckram, cotton, in boxes or in wrapped bales or rolls:	
Sub 1	Single ply, not slit	65
Sub 2	Other than single ply	100
49090	Buckram, other than cotton, in boxes or in wrapped bales or rolls	70
49095	Cloth, brattice, burlap or cotton, fireproofed, in bales, boxes, crates or rolls	55
49100	Cloth, cotton and wire combined, coated or not coated, in packages	85
49110	Cloth, cotton, saturated or coated with asphalt, pitch or tar, NOI, in boxes or in wrapped bundles or rolls	70
49130	Cloth, cotton, photographic, sensitized, in boxes	100
49140	Cloth, cotton, processed for printing, in boxes	85
49150	Cloth or Fabric, cotton or synthetic fiber, rubber separating or interleaving, see Note, item 49152, in boxes, crates or wrapped rolls	70
49152	NOTE—Applies only on cloth or fabric coated, impregnated or otherwise treated to resist the adherence of uncured rubber.	
49160	Cloth or Fabric, cotton or synthetic fiber, or cotton or synthetic fiber and natural fiber combined, not woven, knitted nor stitched, NOI, see Note, item 49162, in boxes or wrapped rolls, subject to Item 170 and having a density in pounds per cubic foot of:	
Sub 1	Less than 1	400
Sub 2	1 but less than 2	300
Sub 3	2 but less than 4	250
Sub 4	4 but less than 6	175
Sub 5	6 but less than 8	125
Sub 6	8 but less than 10	100
Sub 7	10 but less than 12	92.5
Sub 8	12 but less than 15	85
Sub 9	15 but less than 22.5	70
Sub 10	22.5 but less than 30	65
Sub 11	30 or greater	60
49162	NOTE—Does not apply on felt.	
49170	Cloth, cotton or synthetic fiber, laminated, or cotton or synthetic fiber laminated with other fabrics or paper, see Note, item 49172, in boxes, crates, or in wrapped bales or rolls	85
49172	NOTE—Does not apply when: (1) Laminated cloth or fabric is coated with plastic; (2) Any part of the completed cloth consists of cellular, expanded or foam plastic or rubber.	
49180	Cloth, cotton book cover (book binders' cloth), plain, embossed or finished in imitation of leather, in boxes, or in bales completely wrapped, or in wrapped rolls	85
49190	Cloth, wool or other animal fiber, with or without other fibers, NOI, other than plush or pile cloth, in the original piece, not finished articles ready for immediate use, in bales, boxes or wrapped rolls	100
49200	Cloth, motion picture screen, in boxes	100
49205	Cloth, ramie, in bales or rolls	70
49206	Cloth or Cloth Strips, gummed, NOI, in boxes	100
49208	Cloth, screen, woven, glass or synthetic fiber or yarn, coated or not coated, in boxes or wrapped rolls	70

SUBJECT 2

Present Classification Provisions — Continued

Item	Description	Class
	CLOTH, DRY GOODS, FABRICS OR TEXTILES GROUP: subject to item 48920	
49210	Cloth or Fabric , other than with pile or loop surfaces; coated with aluminum, plastic, pyroxylin or rubber, NOI, see Notes, items 49212 and 49214; in bags, bales, boxes or rolls	65
49212	NOTE—Applies on cloth or fabric coated with plastic or rubber only when the plastic or rubber does not exceed 1/16 inch thick and only when the product as tendered for shipment has an actual density of 15 pounds or greater per cubic foot.	
49214	NOTE—Applies only when the coating is applied other than by quilting or stitching. Does not apply on open weave (open mesh) fabrics unless all interstices are covered or filled with coating.	
49220	Cloth or Fabric , membrane (coating reinforcement), cotton, glass or synthetic fiber:	
Sub 1	Coated with asphalt, pitch or tar, see Note, item 49222, in boxes or in rolls on pallets	55
Sub 2	Processed, other than coated, in boxes:	
Sub 3	Cotton	60
Sub 4	Glass or synthetic fiber	70
49222	NOTE—The term 'coated' is descriptive of the finished fabric and applies only when all interstices (openings) are filled with the coating material.	
49225	Cloth or Fabric , garment interlining, in the original piece, cotton and synthetic fiber combined with goat hair, in wrapped rolls	85
49235	Cloth or Fabric , consisting of fibers, yarns or mesh laminated between sheets of cellulose or paper, in boxes or wrapped rolls	65
49237	Cloth or Fabric , other than rugs or carpeting, combined with plastic or rubber, NOI, in boxes or wrapped bales or rolls, subject to Item 170 and having a density in pounds per cubic foot of:	
Sub 1	Less than 1	400
Sub 2	1 but less than 2	300
Sub 3	2 but less than 4	250
Sub 4	4 but less than 6	175
Sub 5	6 but less than 8	125
Sub 6	8 but less than 10	100
Sub 7	10 but less than 12	92.5
Sub 8	12 but less than 15	85
Sub 9	15 but less than 22.5	70
Sub 10	22.5 but less than 30	65
Sub 11	30 or greater	60
49240	Cloth or Netting , cotton, combined with cellulose film, in boxes	100
49250	Cloth or Paper and Cellulose Film , laminated and waxed, in packages	70
49265	Cloth, Fabric or Piece Goods , natural or synthetic fiber, separate or combined, knit or woven, see Notes, items 49266 and 49267, viz.:	
	Cloth, Fabric or Piece Goods , NOI;	
	Corduroy ;	
	Plush or Pile Fabric , NOI;	
	Terry Cloth ;	
	Turkish Toweling ;	
	Velour ;	
	Velvet or Velveteen ;	
	In boxes, wrapped bales or rolls, or Packages 709 or 2282, subject to Item 170 and having a density in pounds per cubic foot of:	
Sub 1	Less than 1	400
Sub 2	1 but less than 2	300
Sub 3	2 but less than 4	250
Sub 4	4 but less than 6	175
Sub 5	6 but less than 8	125
Sub 6	8 but less than 10	100
Sub 7	10 but less than 12	92.5
Sub 8	12 but less than 15	85
Sub 9	15 but less than 22.5	70
Sub 10	22.5 but less than 30	65
Sub 11	30 or greater	60
49266	NOTE—Applies only on cloth, fabric or piece goods in the original piece or mill end remnants. Does not apply on partially or wholly manufactured articles.	
49267	NOTE—Provisions also apply on fire- or water-resistant cloth, fabric or piece goods.	
49270	Cloth or Fabric , glass fiber mesh, not woven; or Tape , glass fiber, woven or not woven; with or without binder or paper backing, in boxes or wrapped rolls	85

SUBJECT 2

Present Classification Provisions — Continued

Item	Description	Class
	CLOTH, DRY GOODS, FABRICS OR TEXTILES GROUP: subject to item 48920	
49390	Dry Goods or Textiles, viz.: Bedspreads or Coverlets, NOI; Blankets, NOI; Cloths or Rags, cleaning, dusting, polishing or wiping, NOI, new or used, including waste, see Note, item 49392; Comforter or Duvet Covers; Curtains or Draperies, NOI; Diapers, cloth, NOI; Dry Goods or Textiles, NOI; Napkins, table; Parts or Pieces, clothing, NOI, cut to size; Pillowcases or Pillow Shams, NOI; Sheets, NOI; Tablecloths; Towels, NOI; Washcloths, NOI; In boxes or wrapped bales or rolls, subject to Item 170 and having a density in pounds per cubic foot of:	
Sub 1	Less than 1	400
Sub 2	1 but less than 2	300
Sub 3	2 but less than 4	250
Sub 4	4 but less than 6	175
Sub 5	6 but less than 8	125
Sub 6	8 but less than 10	100
Sub 7	10 but less than 12	92.5
Sub 8	12 but less than 15	85
Sub 9	15 but less than 22.5	70
Sub 10	22.5 but less than 30	65
Sub 11	30 or greater	60
49392	NOTE—Does not apply on materials regulated by the U.S. Department of Transportation as hazardous and required to bear a Hazard Class or Hazard Division label or placard. For classes applicable to such hazardous materials, see provisions elsewhere in this Classification.	
49410	Fabric, cotton cheesecloth or gauze, waxed, not medicated, meat or poultry packing, in rolls in boxes	77.5
49411	Fabric, erosion control, synthetic fiber and paper combined, in packages	77.5
49413	Fabric, quilted, see Note, item 49414, in bales, boxes or wrapped rolls, subject to Item 170 and having a density in pounds per cubic foot of:	
Sub 1	Less than 4	300
Sub 2	4 or greater	150
49414	NOTE—Applies only on unwoven fiber batting, padding or wadding, stitched or quilted between facings of knitted or woven cloth, other than quilted blanket, bed cover or garment lining, pads or padding.	
49415	Fabric, tire, hose or belting, in bales, boxes or wrapped rolls	70
49420	Fabric, woven cellulose film or woven cellulose and paper combined, in packages	85
49430	Fabric, woven from glass fiber rovings only, having a weight per square yard of not less than twenty ounces, in boxes or in rolls wrapped in burlap and paper laminated with asphalt	70
49440	Fabric or Bagging or Backing, woven paper or woven paper combined with cotton, rayon or other synthetic fibers or yarns, in packages	70
49443	Fabrics, cotton, viz.: Cheesecloth; Gauze; Lace; Leno Goods; Marquisette; Net; Netting; Scrim; Voile; In bales, boxes, canvas bags or wrapped rolls	100
49445	Fabrics, lace, other than cotton, in boxes	100

SUBJECT 2

Present Classification Provisions — Concluded

Package 709

Each roll must be protected by an inner wrapping of waterproof paper, ends twisted and securely tied with wire, and sealed with sealing tape.

Package 2282

Rolls, each not exceeding 12 inches in diameter and not exceeding 125 pounds, may be unitized in bundles by use of polyethylene stretch film of one mil thickness, spirally wound around unit to provide 14 thicknesses at ends and five thicknesses at center of rolls. Fiber tubes of five inch inside diameter and 1/4 inch wall thickness, 48 inches in length must be positioned within bundle, one on each side to facilitate use of mechanical handling equipment.

Gross weight must not exceed 2,000 pounds.

Proposed Classification Provisions

Item	Description	Class
48920	CLOTH, ►FABRIC, DRY GOODS OR TEXTILES GROUP: see Note, item 48921	
►48921	NOTE—Except where otherwise specified, provisions subject to this grouping do not apply on cloth, fabric, dry goods or textiles that require temperature control during transit.	
48970	Bagging or Cloth, burlap, gunny, ixtle (istle), jute or sisal, decorated, dyed NOI, printed or surface coated, etc...☒Cancel; see item A-NEW.	
48980	Bagging or Cloth, burlap, gunny, ixtle (istle), jute or sisal, dyed not more than one color, rolled, etc...☒Cancel; see item A-NEW.	
49010	Bagging or Cloth, burlap, gunny, ixtle (istle), jute or sisal, NOI, with or without paper or plastic film lining, etc...☒Cancel; see item A-NEW.	
49050	Bottoms, canvas, etc...☒Cancel; see item A-NEW.	
49080	Buckram, cotton, etc...☒Cancel; see item A-NEW.	
49090	Buckram, other than cotton, etc...☒Cancel; see item A-NEW.	
49095	Cloth, brattice, burlap or cotton, fireproofed, etc...☒Cancel; see item A-NEW.	
49100	Cloth, cotton and wire combined, coated or not coated, etc...☒Cancel; see item A-NEW.	
49110	Cloth, cotton, saturated or coated with asphalt, pitch or tar, NOI, etc...☒Cancel; see item A-NEW.	
49130	Cloth, cotton, photographic, sensitized, etc...☒Cancel; see item A-NEW.	
49140	Cloth, cotton, processed for printing, etc...☒Cancel; see item A-NEW.	
49150	Cloth or Fabric, cotton or synthetic fiber, rubber separating or interleaving, see Note, item 49152, etc...☒Cancel; see item A-NEW.	
49152	NOTE—☒Cancel; no further application.	
49160	Cloth or Fabric, cotton or synthetic fiber, or cotton or synthetic fiber and natural fiber combined, not woven, knitted nor stitched, NOI, see Note, item 49162, etc...☒Cancel; see item A-NEW.	
49162	NOTE—☒Cancel; no further application.	
49170	Cloth, cotton or synthetic fiber, laminated, or cotton or synthetic fiber laminated with other fabrics or paper, see Note, item 49172, etc...☒Cancel; see item A-NEW.	
49172	NOTE—☒Cancel; no further application.	
49180	Cloth, cotton book cover (book binders' cloth), plain, embossed or finished in imitation of leather, etc...☒Cancel; see item A-NEW.	
49190	Cloth, wool or other animal fiber, with or without other fibers, NOI, other than plush or pile cloth, in the original piece, not finished articles ready for immediate use, etc...☒Cancel; see item A-NEW.	
49200	Cloth, motion picture screen, etc...☒Cancel; see item A-NEW.	
49205	Cloth, ramie, etc...☒Cancel; see item A-NEW.	
49206	Cloth or Cloth Strips, gummed, NOI, etc...☒Cancel; see item A-NEW.	
49208	Cloth, screen, woven, glass or synthetic fiber or yarn, coated or not coated, etc...☒Cancel; see item A-NEW.	
49210	Cloth or Fabric, other than with pile or loop surfaces; coated with aluminum, plastic, pyroxylin or rubber, NOI, see Notes, items 49212 and 49214, etc...☒Cancel; see item A-NEW.	
49212	NOTE—☒Cancel; no further application.	
49214	NOTE—☒Cancel; no further application.	

SUBJECT 2

Proposed Classification Provisions — Continued

Item	Description	Class
	CLOTH, FABRIC, DRY GOODS OR TEXTILES GROUP: subject to item 48920	
49220	Cloth or Fabric , membrane (coating reinforcement), cotton, glass or synthetic fiber, etc...☒Cancel; see item A-NEW.	
49222	NOTE—☒Cancel; no further application.	
49225	Cloth or Fabric , garment interlining, in the original piece, cotton and synthetic fiber combined with goat hair, etc...☒Cancel; see item A-NEW.	
49235	Cloth or Fabric , consisting of fibers, yarns or mesh laminated between sheets of cellulose or paper, etc...☒Cancel; see item A-NEW.	
49237	Cloth or Fabric , other than rugs or carpeting, combined with plastic or rubber, NOI, etc...☒Cancel; see item A-NEW.	
49240	Cloth or Netting , cotton, combined with cellulose film, etc...☒Cancel; see item A-NEW.	
49250	Cloth or Paper and Cellulose Film , laminated and waxed, etc...☒Cancel; see item A-NEW.	
★A-NEW	Cloth, Fabric, Dry Goods or Textiles , NOI, see Notes, items B-NEW, C-NEW and D-NEW, in boxes or wrapped bales or rolls, subject to Item 170 and having a density in pounds per cubic foot of:	
Sub 1	Less than 1	400
Sub 2	1 but less than 2	300
Sub 3	2 but less than 4	250
Sub 4	4 but less than 6	175
Sub 5	6 but less than 8	125
Sub 6	8 but less than 10	100
Sub 7	10 but less than 12	92.5
Sub 8	12 but less than 15	85
Sub 9	15 but less than 22.5.....	70
Sub 10	22.5 but less than 30.....	65
Sub 11	30 or greater.....	60
★B-NEW	NOTE—Also applies on cloth, fabric, dry goods or textiles coated or combined with other materials, NOI.	
★C-NEW	NOTE—Provisions for dry goods include, but are not limited to: Bedspreads or Coverlets , NOI; Blankets , NOI; Cloths or Rags , cleaning, dusting, polishing or wiping, NOI, new or used, including waste; Comforter or Duvet Covers ; Curtains or Draperies , NOI; Diapers , cloth, NOI; Napkins , table; Parts or Pieces , clothing, NOI, cut to size; Pillowcases or Pillow Shams , NOI; Sheets , NOI; Tablecloths ; Towels , NOI; Washcloths , NOI;	
★D-NEW	NOTE—Does not apply on materials regulated by the U.S. Department of Transportation as hazardous and required to bear a Hazard Class or Hazard Division label or placard. For classes applicable to such hazardous materials, see provisions elsewhere in this Classification.	
49265	Cloth, Fabric or Piece Goods , natural or synthetic fiber, separate or combined, knit or woven, see Notes, items 49266 and 49267, etc...☒Cancel; see item A-NEW.	
49266	NOTE—☒Cancel; no further application.	
49267	NOTE—☒Cancel; no further application.	
49270	Cloth or Fabric , glass fiber mesh, not woven; or Tape , glass fiber, woven or not woven; with or without binder or paper backing, etc...☒Cancel; see item A-NEW.	
49390	Dry Goods or Textiles , etc...☒Cancel; see item A-NEW.	
49392	NOTE—☒Cancel; see item D-NEW.	
49410	Fabric , cotton cheesecloth or gauze, waxed, not medicated, meat or poultry packing, etc...☒Cancel; see item A-NEW.	
49411	Fabric , erosion control, synthetic fiber and paper combined, etc...☒Cancel; see item A-NEW.	
49413	Fabric , quilted, see Note, item 49414, etc...☒Cancel; see item A-NEW.	
49414	NOTE—☒Cancel; no further application.	
49415	Fabric , tire, hose or belting, etc...☒Cancel; see item A-NEW.	
49420	Fabric , woven cellulose film or woven cellulose and paper combined, etc...☒Cancel; see item A-NEW.	
49430	Fabric , woven from glass fiber rovings only, having a weight per square yard of not less than twenty ounces, etc...☒Cancel; see item A-NEW.	
49440	Fabric or Bagging or Backing , woven paper or woven paper combined with cotton, rayon or other synthetic fibers or yarns, etc...☒Cancel; see item A-NEW.	
49443	Fabrics , cotton, etc...☒Cancel; see item A-NEW.	
49445	Fabrics , lace, other than cotton, etc...☒Cancel; see item A-NEW.	

SUBJECT 2

Proposed Classification Provisions — Concluded

Package 709

⇒Cancel; no further application.

Package 2282

⇒Cancel; no further application.

Analysis

Introduction

There are currently four items in the Cloth, Dry Goods, Fabrics or Textiles Group—items 49160, 49237, 49265 and 49390, as shown in the Present Classification Provisions herein—that assign the FCDC’s standard 11-subprovision density scale. This creates undue complexity.

There are also numerous other items in the Cloth, Dry Goods, Fabrics or Textiles Group that name particular types of cloth or fabric, and these provisions can be difficult to interpret, apply or verify. Moreover, the involved cloth or fabric exhibits a wide range of densities. The transportation characteristics below relate to items 48970, 48980, 49010, 49050, 49080, 49090, 49095, 49100, 49110, 49130, 49140, 49150, 49170, 49180, 49190, 49200, 49205, 49206, 49208, 49210, 49220, 49225, 49235, 49240, 49250, 49270, 49410, 49411, 49413, 49415, 49420, 49430, 49440, 49443 and 49445, as shown in the Present Classification Provisions herein.

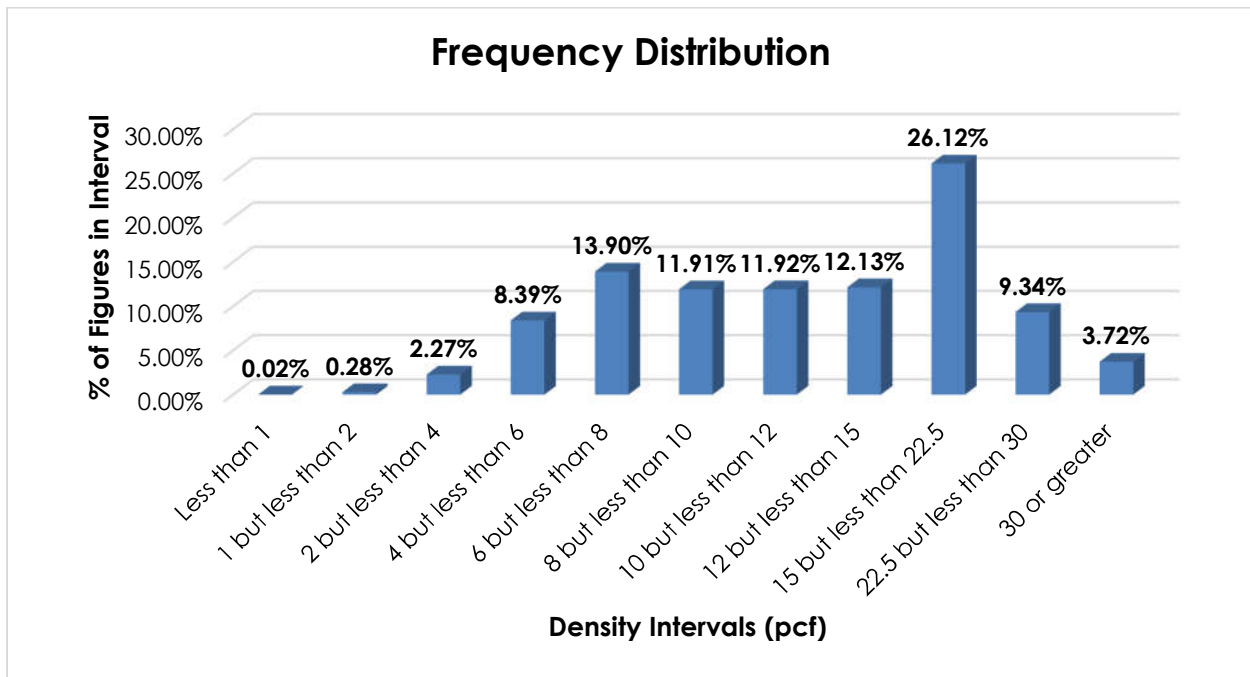
Transportation Characteristics

Density—Overall, the information of record includes 60,065 density observations obtained from the FCDC’s Density Study¹. The densities range from 0.80 to 47.94 pcf, with an overall average density of 13.88 pcf. As shown in the graph on the following page, the densities are widely distributed throughout most of the range.

THIS SPACE INTENTIONALLY LEFT BLANK

¹ The Density Study is part of an ongoing effort by the FCDC to collect information on actual shipments across all product categories handled by the LTL industry. Carriers that choose to participate in the Study periodically submit shipment data captured through their respective freight auditing programs. The FCDC uses verifiable data points, identified by NMFC item, that include the weight and the dimensions and/or cube of the shipping unit.

SUBJECT 2



Handling, Stowability and Liability—There have been no reports of unusual or significant handling, stowability or liability concerns.

Conclusion

Based on the foregoing analysis, it is proposed to cancel items 48970, 48980, 49010, 49050, 49080, 49090, 49095, 49100, 49110, 49130, 49140, 49150, 49170, 49180, 49190, 49200, 49205, 49206, 49208, 49210, 49220, 49225, 49235, 49240, 49250, 49270, 49410, 49411, 49413, 49415, 49420, 49430, 49440, 49443 and 49445, as well as items 49160, 49237, 49265 and 49390, with reference to a new item, naming “Cloth, Fabric, Dry Goods or Textiles, NOI,” with classes predicated on the FCDC’s standard 11-subprovision density scale².

In the interest of clarification, two new Notes would be established, and Note, item 49392 would be canceled and reestablished, attendant to the new item.

Notes, items 49152, 49162, 49172, 49212, 49214, 49222, 49266, 49267 and 49414 would be canceled as having no further application. Also, the generic heading, item 48920, and Note, item 48921, would be amended in the interest of uniformity.

The FCDC’s Packaging Manager has reviewed the proposed minimum packaging requirements, i.e. “in boxes or wrapped bales or rolls,” and determined that they are appropriate for the LTL environment. Additionally, pursuant to the recommendation of the FCDC’s Packaging Manager, Packages 709 and 2282 would be canceled with no further application.

² The FCDC’s standard 11-subprovision density scale includes reference to Item (Rule) 170, the inadvertence clause.