

**SUBJECT 3**

**Re:** Beds or Cots

**Contact:** Adam C. Mercer Telephone — (703) 838-1911 mercer@nmfta.org

**Proponent:** Freight Classification Development Council

**Present Classification Provisions**

Item	Description	Class
	<b>FURNITURE GROUP:</b> subject to item 79000	
	<b>Metallic or Wooden:</b> subject to item 79600	
79720	<b>Beds</b> , folding, upright, door, recess or wall, disappearing type, with or without rollers, steel:	
Sub 1	In Package 19F .....	150
Sub 2	In Packages 1F, 3F, 5F, 21F or 22F .....	125
79740	<b>Beds, KD (Ends and Rails), or Bed Ends</b> , including <b>Headboards or Footboards</b> , see Notes, items 79741, 79742 and 79744:	
Sub 1	Metal, in Packages 1F, 2F, 3F, 5F, 19F, 24F or 138F .....	100
Sub 2	Wooden, NOI, in Packages 1F, 2F, 3F, 5F, 19F, 24F or 138F .....	125
79741	NOTE—Wooden blocks not less than 2 inches thick and 2 inches in width, or 1 inch thick by 1 <sup>3</sup> / <sub>8</sub> inches deep and 5 inches long must be inserted over protruding lugs or hooks on footboards of metal bed ends, and must be covered with padding or double-faced corrugated fiberboard securely tied in place.	
79742	NOTE—Class will also apply on accompanying necessary equipment of ladders and guardrails.	
79744	NOTE—Unfinished bed ends may be shipped in Package 9F.	
80985	<b>Cots</b> , SU, loose or in packages .....	300
81000	<b>Cots or Beds</b> , folding, NOI, see Note, item 81002:	
81002	NOTE—Units authorized for loose shipment must be secured so as not to open during transportation.	
81003	Aluminum frame with linked or woven wire springs, with or without mattresses or pads, KD, in boxes, subject to Item 170 and having a density in pounds per cubic foot of:	
Sub 1	Less than 4 .....	250
Sub 2	4 or greater .....	200
81005	Aluminum and fabric, KD flat, in Packages 19F, 25F or 45F .....	150
81008	Metal, NOI, or wood and fabric:	
Sub 1	KD flat, in crates or in Package 9F .....	85
Sub 2	Completely collapsed and folded or rolled solid, in crates or in Package 9F .....	70
81020	Linked or woven wire springs and steel frames, frames collapsed or folded, springs detached from frames and collapsed or rolled, loose or in packages .....	70

**SUBJECT 3**

**Present Classification Provisions — Concluded**

Item	Description	Class
	<b>FURNITURE GROUP:</b> subject to item 79000	
	<b>Metallic or Wooden:</b> subject to item 79600	
	<b>Cots or Beds,</b> folding, NOI: subject to item 81000	
81040*	Steel frame, NOI, in packages:	
Sub 1	Thickness folded exceeding 12 inches, see Note, item 81042 .....	125
Sub 2	Thickness folded exceeding 2 inches but not over 12 inches .....	85
Sub 3	Thickness folded not exceeding 2 inches .....	70
81042*	NOTE—Also applies on one accompanying mattress or pad when in Package 10F and enclosed in cot.	
81060*	Steel frame, with coiled wire springs, folded, in packages:	
Sub 1	Thickness exceeding 12 inches, see Note, item 81042, or each compressed to thickness exceeding 3 inches, or not compressed .....	125
Sub 2	Each compressed to thickness not exceeding 3 inches .....	85
82270*	<b>Metallic or Wooden Furniture, viz.:</b>	
	<b>Bins or Shelving,</b> NOI;	
	<b>Freestanding Panels, Partitions or Screens;</b>	
	<b>Metallic or Wooden Furniture,</b> NOI;	
	In Packages 1F, 2F, 3F, 5F, 19F, 21F, 22F, 25F, 40F, 138F, 150F or 151F, see Note, item 82271, subject to Item 170 and having a density in pounds per cubic foot of:	
Sub 1	Less than 1 .....	400
Sub 2	1 but less than 2 .....	300
Sub 3	2 but less than 4 .....	250
Sub 4	4 but less than 6 .....	175
Sub 5	6 but less than 8 .....	125
Sub 6	8 but less than 10 .....	100
Sub 7	10 but less than 12 .....	92.5
Sub 8	12 but less than 15 .....	85
Sub 9	15 but less than 22.5 .....	70
Sub 10	22.5 but less than 30 .....	65
Sub 11	30 or greater .....	60
82271	NOTE—Aluminum furniture will be accepted in packages authorized for shipment of same articles made of steel or wood.	

\*Published in Supplement 1 to NMF 100-AV, effective April 9, 2022

SUBJECT 3

Proposed Classification Provisions

Item	Description	Class
	<b>FURNITURE GROUP:</b> subject to item 79000	
	<b>Metallic or Wooden:</b> subject to item 79600	
79720	<b>Beds</b> , folding, upright, door, recess or wall, disappearing type, with or without rollers, steel, etc .....	⇒Cancel; see item 82270
79740	<b>Beds, KD (Ends and Rails), or Bed Ends</b> , including <b>Headboards or Footboards</b> , etc .....	⇒Cancel; see item 82270
79741	NOTE—⇒Cancel; no further application.	
79742	NOTE—⇒Cancel; no further application.	
79744	NOTE—⇒Cancel; no further application.	
80985	<b>Cots, SU</b> , etc .....	⇒Cancel; see item 82270
81000	<b>Cots or Beds</b> , folding, NOI, etc .....	⇒Cancel; see item 82270
81002	NOTE—⇒Cancel; no further application.	
81003	Aluminum frame with linked or woven wire springs, with or without mattresses or pads, KD, etc .....	⇒Cancel; see item 82270
81005	Aluminum and fabric, KD flat, etc .....	⇒Cancel; see item 82270
81008	Metal, NOI, or wood and fabric, etc .....	⇒Cancel; see item 82270
81020	Linked or woven wire springs and steel frames, etc .....	⇒Cancel; see item 82270
81040	Steel frame, NOI, etc. ....	⇒Cancel; see item 82270
81042	NOTE—⇒Cancel; no further application.	
81060	Steel frame, with coiled wire springs, folded, etc. ....	⇒Cancel; see item 82270

THIS SPACE INTENTIONALLY LEFT BLANK

**SUBJECT 3**

**Proposed Classification Provisions — Concluded**

Item	Description	Class
	<b>FURNITURE GROUP:</b> subject to item 79000	
	<b>Metallic or Wooden:</b> subject to item 79600	
82270	<b>Metallic or Wooden Furniture, viz.:</b> ⇒ <b>Bed Ends</b> , including <b>Headboards or Footboards</b> ; ⇒ <b>Beds or Cots</b> , NOI, with or without mattresses or box springs; <b>Bins or Shelving</b> , NOI; <b>Freestanding Panels, Partitions or Screens</b> ; <b>Metallic or Wooden Furniture</b> , NOI; In Packages 1F, 2F, 3F, 5F, 19F, 21F, 22F, ⇒24F, 25F, 40F, 138F, 150F or 151F, see Note, item 82271, subject to Item 170 and having a density in pounds per cubic foot of:	
Sub 1	Less than 1.....	400
Sub 2	1 but less than 2.....	300
Sub 3	2 but less than 4.....	250
Sub 4	4 but less than 6.....	175
Sub 5	6 but less than 8.....	125
Sub 6	8 but less than 10.....	100
Sub 7	10 but less than 12.....	92.5
Sub 8	12 but less than 15.....	85
Sub 9	15 but less than 22.5.....	70
Sub 10	22.5 but less than 30.....	65
Sub 11	30 or greater.....	60
82271	NOTE— Aluminum furniture will be accepted in packages authorized for shipment of same articles made of steel or wood.	

**Analysis**

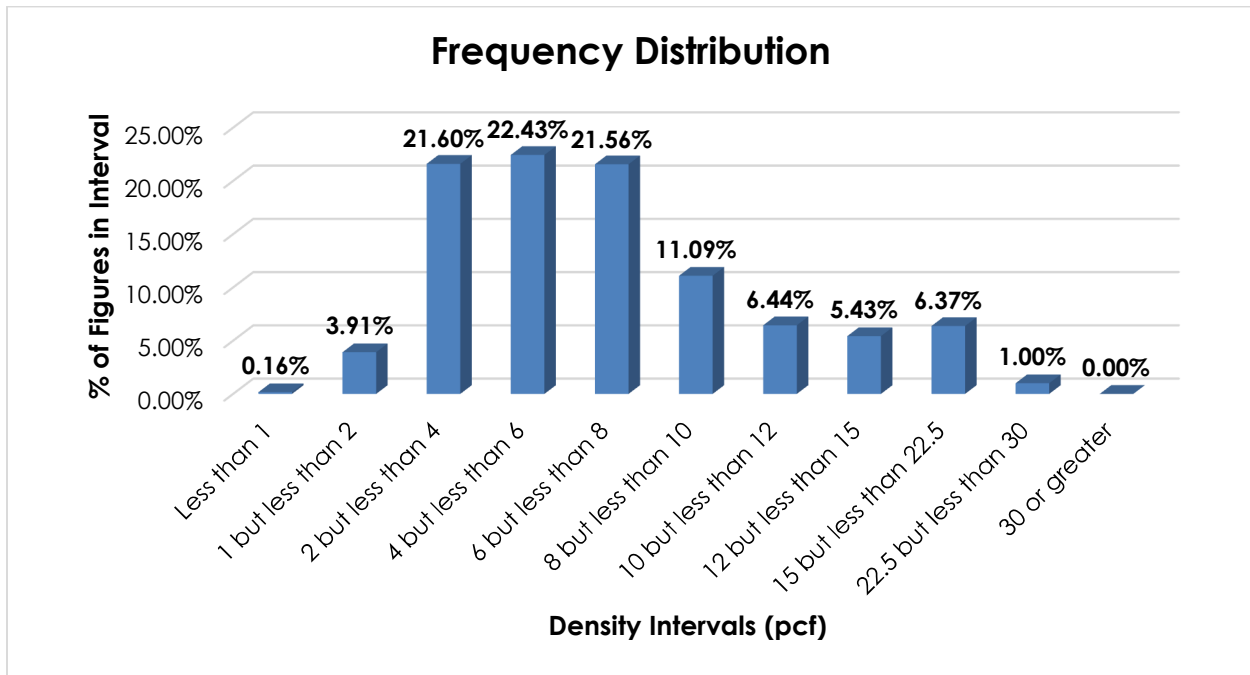
**Introduction**

This proposal is based on information developed through Research Project 1480, which was initiated to review the transportation characteristics of “Beds, folding, upright, door, recess or wall, disappearing type,” as embraced by item 79720. The FCDC considered a proposal to amend item 79720 on Docket 2022-2, Subject 9 (June 2022). However, during the FCDC public meeting, comments were made regarding the distribution of densities, and the FCDC subsequently voted to withdraw that proposal. The project was then expanded to include other beds or cots, as shown in the Present Classification Provisions herein.

SUBJECT 3

Transportation Characteristics

**Density**—The information of record includes 30,155 density observations submitted by carriers and obtained from the FCDC’s Density Study<sup>1</sup>. The densities range from 0.20 to 24.35 pcf, with an overall average density of 7.15 pcf. As shown in the graph below, the distribution is spread broadly across the range.



**Handling, Stowability and Liability**—There have been no reports of unusual or significant handling, stowability or liability concerns.

Conclusion

Based on the foregoing analysis, items 79720, 79740, 80985, 81000, 81003, 81005, 81008, 81020, 81040 and 81060 would be canceled with reference to the full-scale density-based provisions of item 82270<sup>2</sup>.

Concurrently, in the interest of clarification, this proposal would amend the “viz.” listing in item 82270 to include “Bed Ends, including Headboards or Footboards” and “Beds or Cots, NOI, with or without mattresses or box springs.”

Additionally, reference to Package 24F would be added to item 82270.

<sup>1</sup> The Density Study is part of an ongoing effort by the FCDC to collect information on actual shipments across all product categories handled by the LTL industry. Carriers that choose to participate in the Study periodically submit shipment data captured through their respective freight auditing programs. The FCDC uses verifiable data points, identified by NMFC item, that include the weight and the dimensions and/or cube of the shipping unit.

<sup>2</sup> Item 82270 provides the FCDC’s standard 11-subprovision density scale, which includes reference to Item (Rule) 170, the inadvertence clause.

**SUBJECT 3**

Notes, items 79741, 79742, 79744, 81002 and 81042 would be canceled with no further application.