

**SUBJECT 8**

**Re:** Abrasives Group

**Contact:** Lisa K. O'Donnell Telephone — (703) 838-1838 odonnell@nmfta.org

**Proponent:** Freight Classification Development Council

**Present Classification Provisions**

Item	Description	Class
1010	<b>ABRASIVES GROUP:</b> see Note, item 1011	
1011	NOTE—This grouping applies only on Alundum®, corundum, emery or other natural or synthetic abrasive material consisting chiefly of aluminum oxide or silicon carbide, as well as articles made from, or having abrasive surface(s) of, such material. Alundum® is a registered trade name of Norton Company.	
1020	<b>Abrasives, viz.:</b> <b>Bonded Abrasive Blocks;</b> <b>Crude or Lump;</b> <b>Flour or Grain;</b> <b>Refuse,</b> including <b>Broken Wheels, Wheel Stubs or Wheel Grindings,</b> see Note, item 1021; <b>Wheels,</b> pulp grinding or other than pulp grinding, see Note, item 1021; In boxes or drums, see Note, item 1022 .....55	
1021	NOTE—Such articles may be composed in part of materials other than abrasives.	
1022	NOTE—The following departures from packing requirements are permitted: 1. Crude or lump abrasives may be shipped in bags. 2. Abrasive flour, grain or refuse may be shipped in packages. 3. Abrasive wheels, pulp grinding or other than pulp grinding, may be shipped in crates or on lift truck skids or pallets. 4. Abrasive wheels, other than pulp grinding, may be shipped in Package 2105.	
1060	<b>Belts,</b> abrasive, in boxes, subject to Item 170 and having a density in pounds per cubic foot of:	
Sub 1	Less than 1 .....	400
Sub 2	1 but less than 2 .....	300
Sub 3	2 but less than 4 .....	250
Sub 4	4 but less than 6 .....	175
Sub 5	6 but less than 8 .....	125
Sub 6	8 but less than 10 .....	100
Sub 7	10 but less than 12 .....	92.5
Sub 8	12 but less than 15 .....	85
Sub 9	15 but less than 22.5 .....	70
Sub 10	22.5 but less than 30 .....	65
Sub 11	30 or greater .....	60

**SUBJECT 8**

**Present Classification Provisions — Concluded**

Item	Description	Class
	<b>ABRASIVES GROUP:</b> subject to item 1010	
1100	<b>Cloth or Paper</b> , abrasive, including <b>Emery Cloth or Paper or Sandpaper</b> , other than belts, in packages.....	55
1150	<b>Pads, Sponges or Blocks</b> , sanding, expanded plastic or rubber with one or more abrasive surfaces, in boxes.....	110

**Package 2105**

In full telescopic boxes made of doublewall corrugated fiberboard, the fiberboard meeting all the requirements of Item 222, Secs. 2 and 3 for boxes testing not less than 350 pounds except the gross weight must not exceed 300 pounds. Article must be protected on each side with a fiberboard sheet, the full dimensions of the box and the same material specification as the box.

Box must be securely closed with at least 2 steel straps not less than 3/4 inch x 0.020 inch. Singlewall corrugated fiberboard pads of sufficient strength must be positioned between the edges of the box and the steel straps to prevent puncturing of the box.

**Proposed Classification Provisions**

Item	Description	Class
1010	<b>ABRASIVES GROUP:</b> ⇨Cancel; no further application.	
1011	NOTE—⇨Cancel; see item B-NEW.	
1020	<b>Abrasives</b> , etc .....	⇨Cancel; see item A-NEW
1021	NOTE—⇨Cancel; no further application.	
1022	NOTE—⇨Cancel; no further application.	

THIS SPACE INTENTIONALLY LEFT BLANK

SUBJECT 8

Proposed Classification Provisions — Concluded

Item	Description	Class
	<b>ABRASIVES GROUP:</b> subject to item 1010	
⇒A-NEW	<b>Abrasives</b> , see Note, item B-NEW, <b>viz.:</b> <b>Abrasive Belts;</b> <b>Abrasive Cloth or Paper</b> , including <b>Emery Cloth or Paper or Sandpaper;</b> <b>Abrasive Wheels;</b> <b>Bonded Abrasive Blocks;</b> <b>Crude or Lump;</b> <b>Flour or Grain;</b> <b>Refuse</b> , including <b>Broken Wheels, Wheel Stubs or Wheel Grindings;</b> <b>Sanding Pads, Sponges or Blocks;</b> In bags, boxes or drums, subject to Item 170 and having a density in pounds per cubic foot of:	
Sub 1	Less than 1 .....	400
Sub 2	1 but less than 2 .....	300
Sub 3	2 but less than 4 .....	250
Sub 4	4 but less than 6 .....	175
Sub 5	6 but less than 8 .....	125
Sub 6	8 but less than 10 .....	100
Sub 7	10 but less than 12 .....	92.5
Sub 8	12 but less than 15 .....	85
Sub 9	15 but less than 22.5.....	70
Sub 10	22.5 but less than 30.....	65
Sub 11	30 or greater.....	60
⇒B-NEW	NOTE—Applies only on Alundum®, corundum, emery or other natural or synthetic abrasive material consisting chiefly of aluminum oxide or silicon carbide, as well as articles made from, or having abrasive surface(s) of, such material. Alundum® is a registered trade name of Norton Company.	
1060	<b>Belts</b> , abrasive, etc .....	⇒Cancel; see item A-NEW
1100	<b>Cloth or Paper</b> , abrasive, etc .....	⇒Cancel; see item A-NEW
1150	<b>Pads, Sponges or Blocks</b> , sanding, etc.....	⇒Cancel; see item A-NEW

**Package 2105**

⇒Cancel; no further application.

**SUBJECT 8**

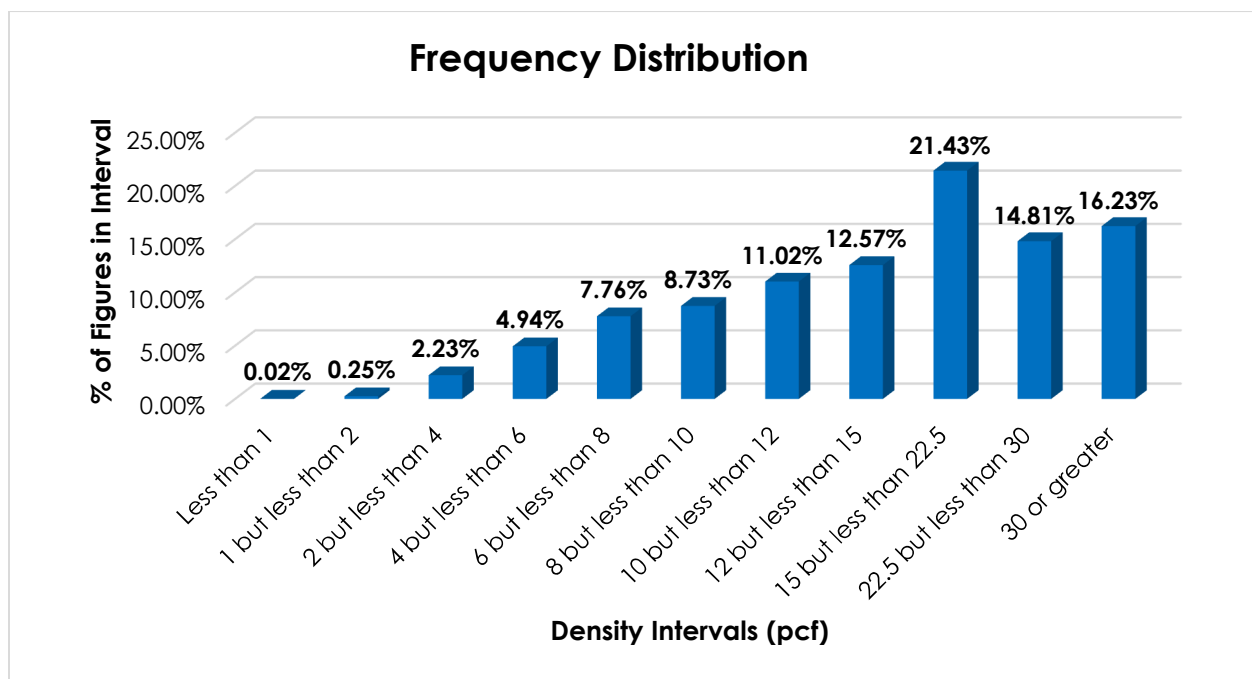
**Analysis**

**Introduction**

There are currently four items in the Abrasives Group—items 1020, 1060, 1100 and 1150, as shown in the Present Classification Provisions herein—that name particular types of abrasives, and these provisions can be difficult to interpret, apply or verify. Moreover, the involved abrasives exhibit a wide range of densities. The transportation characteristics below relate to items 1020, 1100 and 1150.

**Transportation Characteristics**

**Density**—The information of record includes 50,278 density observations obtained from the FCDC’s Density Study<sup>1</sup>. The densities range from 0.16 to 149.90 pcf, with an overall average density of 20.51 pcf. As shown in the graph below, the densities are left-skewed but widely distributed throughout the range.



**Handling, Stowability and Liability**—There have been no reports of unusual or significant handling, stowability or liability concerns.

<sup>1</sup> The Density Study is part of an ongoing effort by the FCDC to collect information on actual shipments across all product categories handled by the LTL industry. Carriers that choose to participate in the Study periodically submit shipment data captured through their respective freight auditing programs. The FCDC uses verifiable data points, identified by NMFC item, that include the weight and the dimensions and/or cube of the shipping unit.

**SUBJECT 8****Conclusion**

Based on the foregoing analysis, it is proposed to cancel items 1020, 1060, 1100 and 1150, with reference to a new item, naming "Abrasives" with a "viz." format and classes predicated on the FCDC's standard 11-subprovision density scale<sup>2</sup>.

Note, item 1011 would be canceled and reestablished as an attendant Note to the proposed new item.

Notes, items 1021 and 1022 would be canceled as having no further application. Also, the generic heading, item 1010, would be canceled with no further application.

The FCDC's Packaging Manager has reviewed the proposed minimum packaging requirements, i.e., "in bags, boxes or drums," and determined that they are appropriate for the LTL environment. Additionally, pursuant to the recommendation of the FCDC's Packaging Manager, Package 2105 would be canceled as having no further application.

---

<sup>2</sup> The FCDC's standard 11-subprovision density scale includes reference to Item (Rule) 170, the inadvertence clause.