

SUBJECT 10

Re: Yarn

Contact: Erin N. Topper Telephone — (703) 838-8856 topper@nmfta.org

Proponent: Freight Classification Development Council

Present Classification Provisions

Item	Description	Class
200280	YARN:	
200300	Cellulose Sponge Coated , on cores or spools, wrapped or in boxes.....	100
200320	Coconut Husk (Cocoa or Coir Yarn):	
Sub 1	In bags, bundles, or in bales not machine pressed	100
Sub 2	In machine pressed bales.....	70
200340	Cotton Mop , in bags, bales or boxes	60
200380	Cotton , NOI, other than in skeins, balls, hanks or on cards; in bags, bales or boxes; or on wrapped rolls, loose or in crates; or on wrapped beams, see Note, item 200432	60
200400	Jute , other than in skeins, balls or hanks:	
Sub 1	In bags.....	70
Sub 2	In bales or boxes, or on wrapped beams, see Note, item 200432, in crates	65
200430*	Synthetic Fiber, NOI; or Cotton and Synthetic Fiber Blended, NOI:	
Sub 1	Other than in skeins, balls, hanks or on cards; in bags, boxes or Packages 2015, 2017, 2018, 2120, 2123, 2151, 2152, 2153, 2154, 2155, 2156, 2186, 2208 or 2295 or on wrapped beams, see Note, item 200432, loose or in crates, cradles or racks, subject to Item 170 and having a density in pounds per cubic foot of:	
Sub 2	Less than 12	100
Sub 3	12 or greater.....	70
200432	NOTE—Wrapped beams or jack spools may be shipped loose only in quantities of 20,000 pounds or more and only when loaded on rails or racks in vehicles so equipped.	
200440	Yarn , NOI, subject to Item 170:	
Sub 1	In skeins, balls, hanks or on cards in packages having a density of less than 6 pounds per cubic foot.....	150
Sub 2	In skeins, balls, hanks or on cards in packages having a density of 6 pounds or greater per cubic foot.....	100
Sub 3	Other than in skeins, balls, hanks or on cards, in bales, boxes or crates, or on wrapped beams or jack spools, see Note, item 200432.....	100

*Published in Supplement 2 to NMF 100-AV, effective August 13, 2022.

SUBJECT 10

Present Classification Provisions — Concluded

Package 2186

Synthetic fiber yarn on cores may be shipped in packages consisting of plastic trays on pallets, enclosed and secured to pallet with heat shrinkable polyethylene pallet wrap film:

Trays—Injection molded or formed trays for purpose of tier separation. Trays must provide for a configuration of male projections allowing for vertical positioning of cores between tiers. Trays must be placed on top and bottom of load and between each tier of cores.

Pallet—Double-face wooden pallet.

Film—5 mil low density polyethylene heat shrinkable film completely covering load and securely attached to pallet by shrinking to maintain load stability.

GROSS WEIGHT: Not to exceed 2,000 pounds.

Package 2208

Yarn wound on tubes must be positioned with a 2-piece self-locking molded high density plastic tray, top and bottom halves having molded spindles which are mated with tube ends so that tube will be held in a stationary vertical position.

Trays must be palletized and unitized by using not less than 2 metal or nonmetal straps.

Gross weight must not exceed 1,000 pounds.

Proposed Classification Provisions

Item	Description	Class
200280	YARN: ⇒Cancel; no further application.	
200300	Cellulose Sponge Coated , etc.....	⇒Cancel; see item NEW
200320	Coconut Husk (Cocoa or Coir Yarn) , etc.....	⇒Cancel; see item NEW
200340	Cotton Mop , etc.....	⇒Cancel; see item NEW
200380	Cotton , NOI, other than in skeins, balls, hanks or on cards, etc.....	⇒Cancel; see item NEW
200400	Jute , other than in skeins, balls or hanks, etc.....	⇒Cancel; see item NEW
200430	Synthetic Fiber , NOI; or Cotton and Synthetic Fiber Blended , NOI, etc.....	⇒Cancel; see item NEW
200432	NOTE—⇒Cancel; no further application.	
200440	Yarn , NOI, etc.....	⇒Cancel; see item NEW

SUBJECT 10

Proposed Classification Provisions — Concluded

Item	Description	Class
⇒NEW	Yarn , NOI, in bales, boxes or Packages 2015, 2017, 2018, 2120, 2123, 2151, 2152, 2153, 2154, 2155, 2156 or 2295, subject to Item 170 and having a density in pounds per cubic foot of:	
Sub 1	Less than 1	400
Sub 2	1 but less than 2	300
Sub 3	2 but less than 4	250
Sub 4	4 but less than 6	175
Sub 5	6 but less than 8	125
Sub 6	8 but less than 10	100
Sub 7	10 but less than 12	92.5
Sub 8	12 but less than 15	85
Sub 9	15 but less than 22.5	70
Sub 10	22.5 but less than 30	65
Sub 11	30 or greater	60

Package 2186

⇒Cancel; no further application.

Package 2208

⇒Cancel; no further application.

Analysis

Introduction

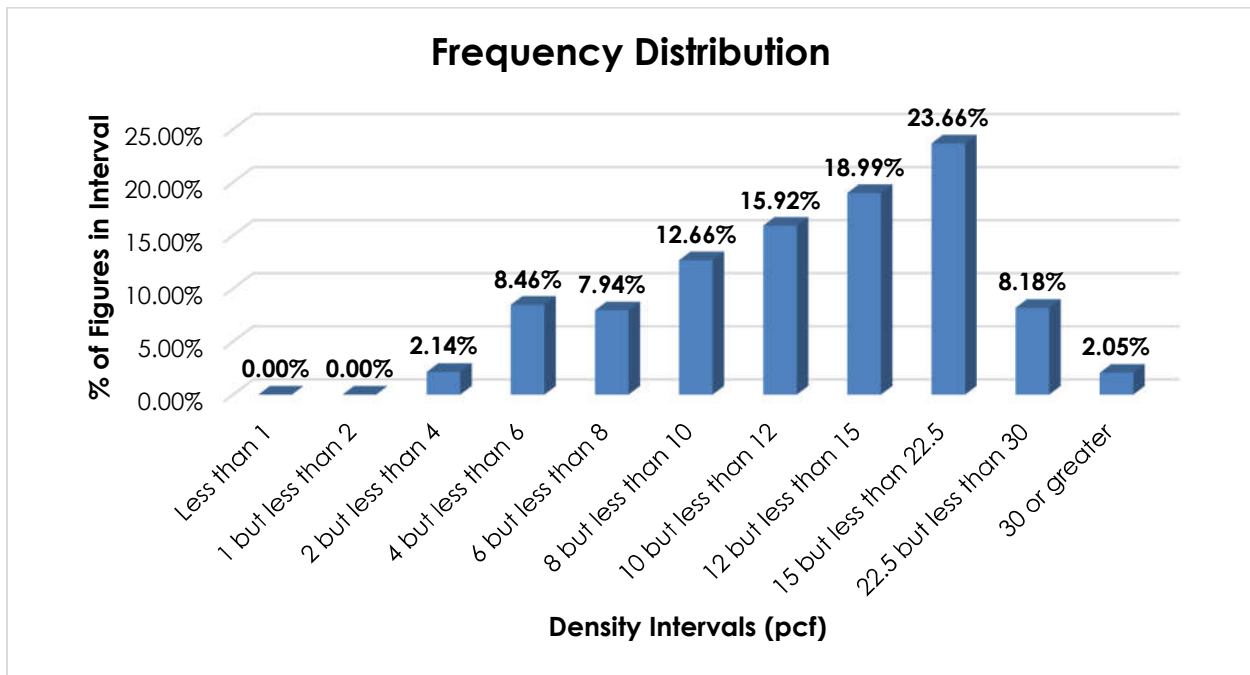
There are numerous items subject to the Yarn generic heading that name particular types of yarn, and these provisions can be difficult to interpret, apply or verify. Moreover, the involved commodities exhibit a wide range of densities. The transportation characteristics below relate to items 200300, 200320, 200340, 200380, 200400, 200430 and 200440, as shown in the Present Classification Provisions herein.

Transportation Characteristics

Density—The information of record includes 8,287 density observations obtained from the FCDC's Density Study¹. The densities range from 2.03 to 39.73 pcf, with an overall average density of 13.57 pcf. As shown in the graph on the following page, the densities are distributed throughout the range.

¹ The Density Study is part of an ongoing effort by the FCDC to collect information on actual shipments across all product categories handled by the LTL industry. Carriers that choose to participate in the Study periodically submit shipment data captured through their respective freight auditing programs. The FCDC uses verifiable data points, identified by NMFC item, that include the weight and the dimensions and/or cube of the shipping unit.

SUBJECT 10



Handling, Stowability and Liability—There have been no reports of unusual or significant handling, stowability or liability concerns.

Conclusion

Based on the foregoing analysis, items 200300, 200320, 200340, 200380, 200400, 200430 and 200440 would be canceled with reference to a new item, naming "Yarn, NOI," with classes predicated on the FCDC's standard 11-subprovision density scale².

The generic heading, item 200280, and Note, item 200432 would be canceled as having no further application.

Packages 2186 and 2208 would also be canceled as having no further application.

² The FCDC's standard 11-subprovision density scale includes reference to Item (Rule) 170, the inadvertence clause.