

**SUBJECT 13**

**Re:** Bicycles, electric (Electric Bikes or EBikes)

**Contact:** Adam C. Mercer Telephone — (703) 838-1911 mercer@nmfta.org

**Proponent:** Freight Classification Development Council

**Present Classification Provisions**

Item	Description	Class
	<b>VEHICLES, OTHER THAN SELF-PROPELLED:</b> subject to item 188500	
189800	<b>Vehicles, viz:</b> <b>Bicycles;</b> [Other Articles Listed—Not Involved.] In boxes or crates, see Note, item 189804, subject to Item 170 and having a density in pounds per cubic foot of:	
Sub 1	Less than 1 .....	400
Sub 2	1 but less than 2.....	300
Sub 3	2 but less than 4.....	250
Sub 4	4 but less than 6.....	175
Sub 5	6 but less than 8.....	125
Sub 6	8 but less than 10.....	100
Sub 7	10 but less than 12.....	92.5
Sub 8	12 but less than 15.....	85
Sub 9	15 but less than 22.5.....	70
Sub 10	22.5 but less than 30.....	65
Sub 11	30 or greater.....	60
189804	NOTE—Bicycles or unicycles may be shipped in Package 501. Children's automobiles or tricycles may be shipped in Package 2194.	
	<b>VEHICLES, MOTOR:</b> subject to item 190100	
190290	<b>Motorcycles; Motor Scooters, NOI; Mini-Bikes; or Motor-Bikes;</b> two or three wheeled, electric or internal combustion engine powered, in boxes or crates, subject to Item 170 and having a density in pounds per cubic foot of:	
Sub 1	Less than 8.....	150
Sub 2	8 or greater .....	100

**SUBJECT 13**

**Proposed Classification Provisions**

Item	Description	Class
189800	<p><b>VEHICLES, OTHER THAN SELF-PROPELLED:</b> subject to item 188500</p> <p><b>Vehicles, viz.:</b></p> <p><b>Bicycles, ðNOI;</b>                      [Other Articles Listed—No Change.]                      In boxes or crates, see Note, item 189804, subject to Item 170 and having a density in pounds per cubic foot of:</p> <p>Subs 1-11 No Change.</p>	
189804	NOTE—No Change.	
ðNEW	<b>VEHICLES, MOTOR:</b> subject to item 190100	
190290	<p><b>EBikes (Electric Bicycles),</b> in boxes or crates.....250</p> <p><b>Motorcycles; Motor Scooters, NOI; Mini-Bikes; or Motor-Bikes, ðNOI;</b> two or three wheeled, electric or internal combustion engine powered, etc ..... No Change</p>	

**Analysis**

**Introduction**

This proposal is based on the information developed through Research Project 1487, which was initiated to review the transportation characteristics of, and address interpretation issues relating to, electric bicycles.

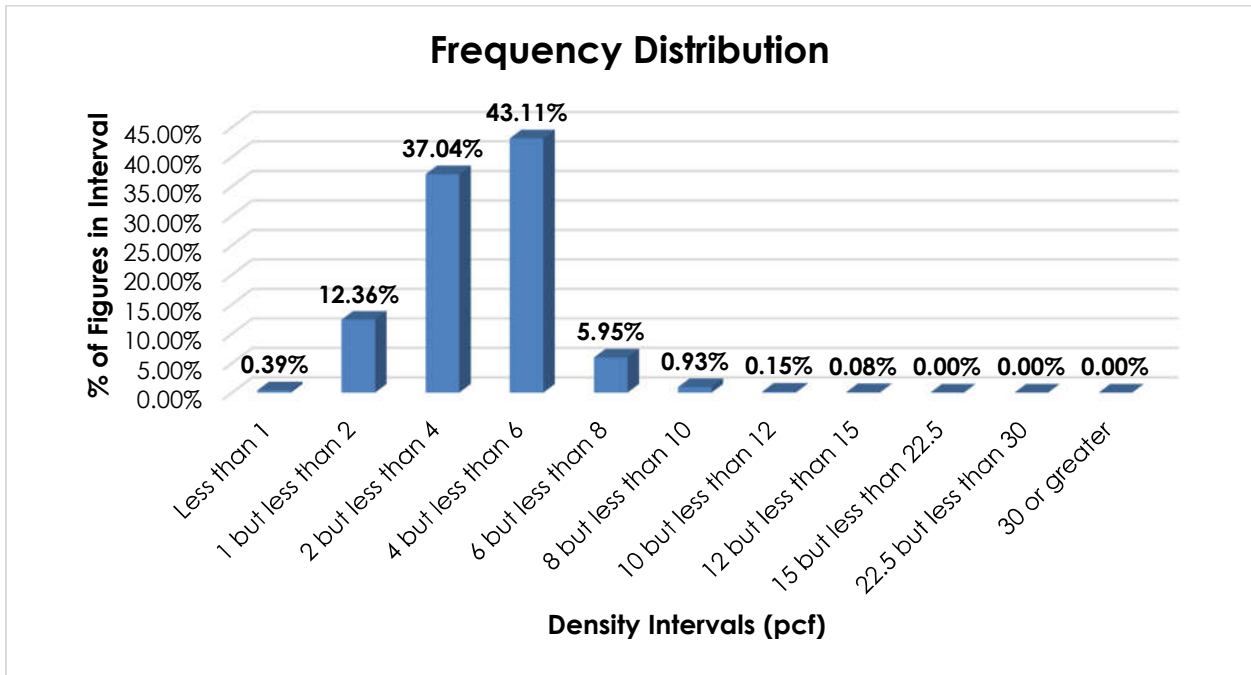
**Transportation Characteristics**

**Density**—The information of record includes 2,589 density observations submitted by a carrier and obtained from the FCDC’s Density Study<sup>1</sup>. The densities range from 0.25 to 13.05 pcf, with an overall average density of 3.93 pcf. As shown in the graph on the following page, there are clustered peaks around the average. Over 80% of the figures fall between 2 and 6 pcf. The overall average is reflective of the distribution of densities.

---

<sup>1</sup> The Density Study is part of an ongoing effort by the FCDC to collect information on actual shipments across all product categories handled by the LTL industry. Carriers that choose to participate in the Study periodically submit shipment data captured through their respective freight auditing programs. The FCDC uses verifiable data points, identified by NMFC item, that include the weight and the dimensions and/or cube of the shipping unit.

SUBJECT 13



**Handling, Stowability and Liability**—There have been no reports of unusual or significant handling, stowability or liability concerns.

**Conclusion**

Based on the foregoing analysis, and to foster clarification and address interpretive issues, a new item would be established, naming “EBikes (Electric Bicycles),” at class 250. Concurrently, the “viz.” listing in item 189800 would be amended to read, “Bicycles, NOI,” and item 190290 would be amended to read, “...Motor-Bikes, NOI.”

The FCDC's Packaging Manager has reviewed the proposed minimum packaging requirements, i.e. “in boxes or crates,” and determined that they are appropriate for the LTL environment.