

**SUBJECT 14**

**Re:** Fishing Tackle, NOI

**Contact:** Angela L. Li Telephone — (703) 838-1882 angela.li@nmfta.org

**Proponent:** Freight Classification Development Council

**Present Classification Provisions**

Item	Description	Class
	<b>ATHLETIC GOODS GROUP:</b> subject to item 15500	
15520	<b>Athletic or Sporting Goods, viz.:</b> <b>Fishing Tackle</b> , plastic or rubber, NOI; [Other Articles Listed—Not Involved.] In boxes or crates, see Note, item 15522, subject to Item 170 and having a density in pounds per cubic foot of:	
Sub 1	Less than 1 .....	400
Sub 2	1 but less than 2.....	300
Sub 3	2 but less than 4.....	250
Sub 4	4 but less than 6.....	175
Sub 5	6 but less than 8.....	125
Sub 6	8 but less than 10.....	100
Sub 7	10 but less than 12.....	92.5
Sub 8	12 but less than 15.....	85
Sub 9	15 but less than 22.5.....	70
Sub 10	22.5 but less than 30.....	65
Sub 11	30 or greater.....	60
15522	NOTE—Not Involved.	
15523	NOTE—Not Involved.	
15524	NOTE—Not Involved.	
15525	NOTE—Not Involved.	
16300	<b>Fishing Tackle</b> , NOI, other than plastic or rubber, in boxes.....	125

THIS SPACE INTENTIONALLY LEFT BLANK

SUBJECT 14

Proposed Classification Provisions

Item	Description	Class
	<b>ATHLETIC GOODS GROUP:</b> subject to item 15500	
15520	<b>Athletic or Sporting Goods, viz.:</b> ⇒ <b>Fishing Tackle</b> , NOI; [Other Articles Listed—No Change.] In boxes or crates, see Note, item 15522, subject to Item 170 and having a density in pounds per cubic foot of:	
Sub 1	Less than 1 .....	400
Sub 2	1 but less than 2.....	300
Sub 3	2 but less than 4.....	250
Sub 4	4 but less than 6.....	175
Sub 5	6 but less than 8.....	125
Sub 6	8 but less than 10.....	100
Sub 7	10 but less than 12.....	92.5
Sub 8	12 but less than 15.....	85
Sub 9	15 but less than 22.5.....	70
Sub 10	22.5 but less than 30.....	65
Sub 11	30 or greater.....	60
15522	NOTE—No Change.	
15523	NOTE—No Change.	
15524	NOTE—No Change.	
15525	NOTE—No Change.	
16300	<b>Fishing Tackle</b> , NOI, other than plastic or rubber, etc.....	⇒Cancel; see item 15520

Analysis

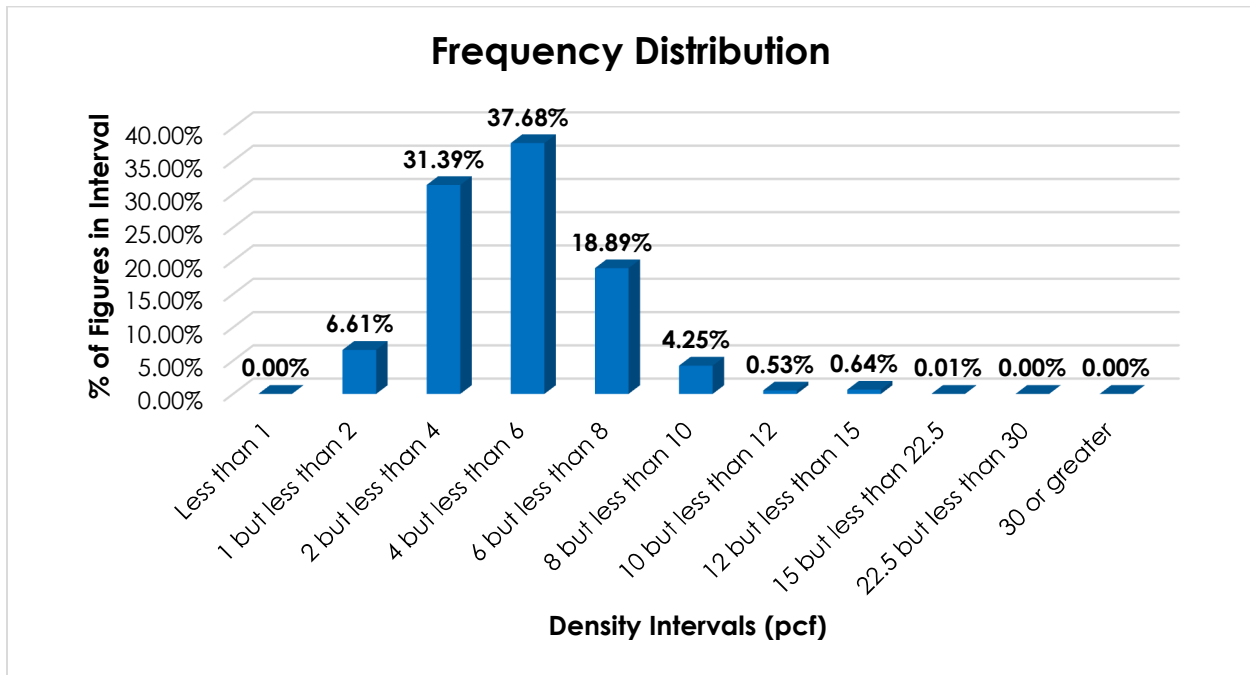
Introduction

This proposal is based on information developed through Research Project 1504, which was initiated to review the transportation characteristics of fishing tackle, NOI, as embraced by item 16300. Item 16300 restricts application to fishing tackle products constructed of materials other than plastic or rubber, while fishing tackle constructed of plastic or rubber is named in item 15520. Research indicates that these products may be constructed from a combination of materials, such as plastic and steel, which may result in interpretative issues.

SUBJECT 14

Transportation Characteristics

**Density**—The information of record includes 8,667 density observations submitted by carriers and obtained from the FCDC’s Density Study<sup>1</sup>. The densities range from 1.01 to 17.07 pcf, with an overall average density of 5.06 pcf. As shown in the graph below, the density distribution is right-skewed.



**Handling, Stowability and Liability**—There have been no reports of unusual or significant handling, stowability or liability concerns.

Conclusion

Based on the foregoing analysis, item 16300 would be canceled with reference to the full-scale, density-based provisions of item 15520<sup>2</sup>. Concurrently, the “viz.” listing for fishing tackle, NOI, in item 15520 would be amended to remove the material construction restriction. While the density distribution shown herein does not indicate a uniform distribution of densities throughout the range, these proposed changes would foster clarification and simplification, as well as address interpretive issues.

<sup>1</sup> The Density Study is part of an ongoing effort by the FCDC to collect information on actual shipments across all product categories handled by the LTL industry. Carriers that choose to participate in the Study periodically submit shipment data captured through their respective freight auditing programs. The FCDC uses verifiable data points, identified by NMFC item, that include the weight and the dimensions and/or cube of the shipping unit.

<sup>2</sup> Item 15520 provides the FCDC’s standard 11-subprovision density scale, which includes reference to Item (Rule) 170, the inadvertence clause.