

**SUBJECT 15**

**Re:** Fireplaces or Fireplace Accessory Group

**Contact:** Larissa A. Franklin Telephone — (703) 838-1824 franklin@nmfta.org

**Proponent:** Freight Classification Development Council

**Present Classification Provisions**

Item	Description	Class
	<b>FIREPLACES OR FIREPLACE ACCESSORY GROUP:</b> subject to item 69310	
69320	<b>Andirons (Firedogs),</b> in boxes or crates:	
Sub 1	Brass or brass and iron or steel combined .....	77.5
Sub 2	Iron or steel .....	70
69340	<b>Dampers,</b> fireplace throat, plate or sheet steel:	
Sub 1	With throats or domes over 7 inches in height, SU:	
Sub 2	Not nested .....	100
Sub 3	Nested .....	70
Sub 4	KD; or with throats or domes 7 inches or less in height .....	70
69350	<b>Fenders or Fireplace Guards or Screens,</b> brass, in boxes or crates:	
Sub 1	Wire:	
Sub 2	In panels or nested .....	77.5
Sub 3	Other than in panels or nested .....	200
Sub 4	Other than wire .....	100
69360	<b>Fenders or Fireplace Guards or Screens,</b> iron or steel, plain or brass coated or plated or with brass trimmings:	
Sub 1	Wire:	
Sub 2	In panels or nested, in boxes or crates, or in bundles wrapped in fiberboard .....	70
Sub 3	Other than in panels or nested, in boxes or crates, or in bundles wrapped in fiberboard .....	150
Sub 4	Cast or wrought, in boxes or crates .....	70
69370	<b>Fireplace Air Heaters and Ventilators combined, iron, or Water Jacketed Fireplaces,</b> iron, see Note, item 69372 .....	85
69372	NOTE—Includes air registers; grate baskets without heating units; dampers, NOI; ash pit doors or ash traps, iron; angles, arches or cranes, iron; not exceeding 15 percent of the weight upon which charges are assessed.	
69380	<b>Fireplaces and Mantels combined,</b> cast stone, without hearth or with hearth detached, in boxes or crates .....	77.5
69390*	<b>Fireplaces,</b> indoor, ceramic, silicon carbide or reinforced concrete, finished or unfinished, in crates .....	77.5
69400	<b>Fireplaces,</b> imitation, fiberboard, in sheets or KD flat, in boxes .....	125
69414	<b>Fireplaces,</b> imitation, wood or wood particleboard faced with imitation stone, other than cast stone, with hearth and mantel, portable, SU, with or without electric logs or heaters, in boxes .....	150

\*Published in Supplement 2 to NMF 100-AV, effective August 13, 2022.

SUBJECT 15

Present Classification Provisions — Continued

Item	Description	Class
	<b>FIREPLACES OR FIREPLACE ACCESSORY GROUP:</b> subject to item 69310	
69420	<b>Fireplaces and Related Articles, viz.:</b> <b>Fireplace Inserts</b> , see Notes, items 69422 and 69423, also in Packages 1F, 2F, 3F, 5F, 21F or 22F; <b>Fireplaces or Imitation Fireplaces</b> , NOI, see Note, item 69422, also in Packages 1F, 2F, 3F, 5F, 21F or 22F; <b>Grates, Grate Baskets or Grate Parts</b> , with or without electric heating units; [Other Articles Listed—Not Involved.] In boxes or crates, subject to Item 170 and having a density in pounds per cubic foot of:	
Sub 1	Less than 1 .....	400
Sub 2	1 but less than 2.....	300
Sub 3	2 but less than 4.....	250
Sub 4	4 but less than 6.....	175
Sub 5	6 but less than 8.....	125
Sub 6	8 but less than 10.....	100
Sub 7	10 but less than 12.....	92.5
Sub 8	12 but less than 15.....	85
Sub 9	15 but less than 22.5.....	70
Sub 10	22.5 but less than 30.....	65
Sub 11	30 or greater.....	60
69422	NOTE—Applies on the articles named, with or without log grates, gas logs, electric logs or heaters, or other accessories in the same package.	
69423	NOTE—When fireplace inserts are shipped in corrugated fiberboard regular slotted style or half-slotted style boxes having a bursting strength of not less than 275 psi and securely strapped on a wood lift truck skid or pallet, gross weight may be increased to not more than 400 pounds.	
69460	<b>Holders or Racks</b> , fireplace wood, in boxes:	
Sub 1	NOI, metal, also in crates:	
Sub 2	With handles attached; or with handles detached, not nested or nested in nests of less than 10 .....	150
Sub 3	With handles detached, nested in nests of 10 or more .....	110
Sub 4	Tubular steel, KD flat .....	77.5
69480	<b>Sets</b> , fireplace tool, see Note, item 69482, in boxes or crates:	
Sub 1	Brass or brass and iron combined .....	77.5
Sub 2	Iron .....	70
69482	NOTE—Applies only on fireplace sets consisting of shovels, pokers and hearth brushes, with or without holders or tongs.	

SUBJECT 15

Present Classification Provisions — Concluded

Item	Description	Class
	<b>RACKS:</b> subject to item 163900	
164390	<b>Racks and Related Articles, viz.:</b> <b>Racks, NOI;</b> [Other Articles Listed—Not Involved.] In packages, subject to Item 170 and having a density in pounds per cubic foot of:	
Sub 1	Less than 1 .....	400
Sub 2	1 but less than 2.....	300
Sub 3	2 but less than 4.....	250
Sub 4	4 but less than 6.....	175
Sub 5	6 but less than 8.....	125
Sub 6	8 but less than 10.....	100
Sub 7	10 but less than 12.....	92.5
Sub 8	12 but less than 15.....	85
Sub 9	15 but less than 22.5.....	70
Sub 10	22.5 but less than 30.....	65
Sub 11	30 or greater.....	60
164393	NOTE—Not Involved.	
164394	NOTE—Not Involved.	

Proposed Classification Provisions

Item	Description	Class
	<b>FIREPLACES OR FIREPLACE ACCESSORY GROUP:</b> subject to item 69310	
69320	<b>Andirons (Firedogs), etc</b> .....	⇒Cancel; see item 69420
69340	<b>Dampers, fireplace throat, plate or sheet steel, etc</b> .....	⇒Cancel; see item 69420
69350	<b>Fenders or Fireplace Guards or Screens, brass, etc</b> .....	⇒Cancel; see item 69420
69360	<b>Fenders or Fireplace Guards or Screens, iron or steel, plain or brass coated or plated or with brass trimmings, etc</b> .....	⇒Cancel; see item 69420
69370	<b>Fireplace Air Heaters and Ventilators combined, iron, or Water Jacketed Fireplaces, iron, etc</b> .....	⇒Cancel; see item 69420
69372	NOTE—⇒Cancel; no further application.	
69380	<b>Fireplaces and Mantels combined, cast stone, without hearth or with hearth detached, etc</b> .....	⇒Cancel; see item 69420
69390	<b>Fireplaces, indoor, ceramic, silicon carbide or reinforced concrete, finished or unfinished, etc</b> .....	⇒Cancel; see item 69420

SUBJECT 15

Proposed Classification Provisions — Continued

Item	Description	Class
	<b>FIREPLACES OR FIREPLACE ACCESSORY GROUP:</b> subject to item 69310	
69400	<b>Fireplaces</b> , imitation, fiberboard, in sheets or KD flat, etc ..... ⇒Cancel; see item 69420	
69414	<b>Fireplaces</b> , imitation, wood or wood particleboard faced with imitation stone, other than cast stone, with hearth and mantel, portable, SU, with or without electric logs or heaters, etc ..... ⇒Cancel; see item 69420	
69420	<b>Fireplaces and Related Articles, viz.:</b> ⇒ <b>Andirons (Firedogs), Grates, Grate Baskets or Grate Parts</b> , with or without electric heating units; ⇒ <b>Dampers</b> , fireplace; ⇒ <b>Fireplace Fenders, Guards or Screens</b> , NOI; ⇒ <b>Fireplace Inserts</b> , see Note, item 69422; ⇒ <b>Fireplaces or Imitation Fireplaces</b> , NOI, see Note, item 69422; ⇒ <del><b>Grates, Grate Baskets or Grate Parts</b></del> , with or without electric heating units; ⇒ <b>Tools or Tool Sets</b> , fireplace; [Other Articles Listed—No Change.] In boxes or crates, subject to Item 170 and having a density in pounds per cubic foot of:	
Sub 1	Less than 1 .....	400
Sub 2	1 but less than 2.....	300
Sub 3	2 but less than 4.....	250
Sub 4	4 but less than 6.....	175
Sub 5	6 but less than 8.....	125
Sub 6	8 but less than 10.....	100
Sub 7	10 but less than 12.....	92.5
Sub 8	12 but less than 15.....	85
Sub 9	15 but less than 22.5.....	70
Sub 10	22.5 but less than 30.....	65
Sub 11	30 or greater.....	60
69422	NOTE—Applies on the articles named, with or without log grates, gas logs, electric logs or heaters, ⇒mantels or other accessories in the same package.	
69423	NOTE—⇒Cancel; no further application.	
69460	<b>Holders or Racks</b> , fireplace wood, etc ..... ⇒Cancel; see item 164390	
69480	<b>Sets</b> , fireplace tool, etc ..... ⇒Cancel; see item 69420	
69482	NOTE—⇒Cancel; no further application.	

SUBJECT 15

Proposed Classification Provisions — Concluded

Item	Description	Class
	<b>RACKS:</b> subject to item 163900	
164390	<b>Racks and Related Articles, viz.:</b> ⇒ <b>Firewood Racks or Holders;</b> <b>Racks, NOI;</b> [Other Articles Listed—No Change.] In packages, subject to Item 170 and having a density in pounds per cubic foot of:	
Sub 1	Less than 1 .....	400
Sub 2	1 but less than 2.....	300
Sub 3	2 but less than 4.....	250
Sub 4	4 but less than 6.....	175
Sub 5	6 but less than 8.....	125
Sub 6	8 but less than 10.....	100
Sub 7	10 but less than 12.....	92.5
Sub 8	12 but less than 15.....	85
Sub 9	15 but less than 22.5.....	70
Sub 10	22.5 but less than 30.....	65
Sub 11	30 or greater .....	60
164393	NOTE—No Change.	
164394	NOTE—No Change.	

Analysis

Introduction

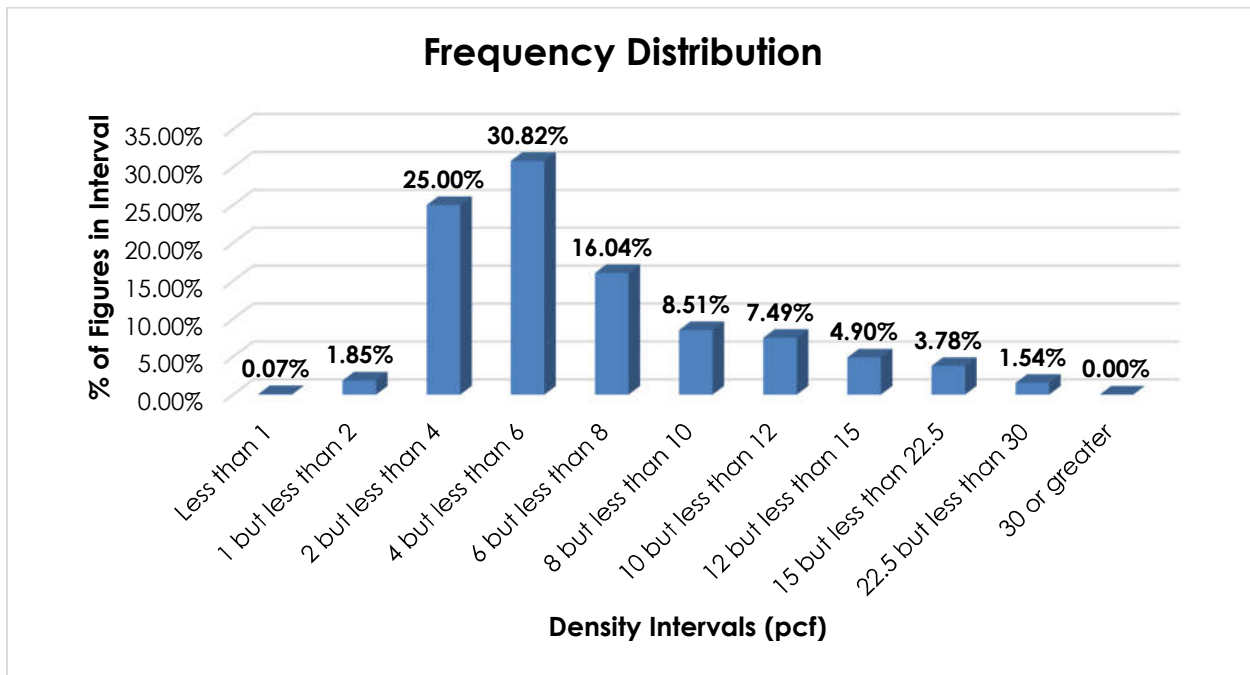
There are numerous items subject to the Fireplaces or Fireplace Accessory Group generic heading that name particular types of fireplaces or fireplace accessories, and these provisions can be difficult to interpret, apply or verify. Moreover, the involved commodities exhibit a wide range of densities. The transportation characteristics below relate to items 69320, 69340, 69350, 69360, 69370, 69380, 69390, 69400, 69414, 69460 and 69480, as shown in the Present Classification Provisions herein.

Transportation Characteristics

**Density**—The information of record includes 4,208 density observations obtained from the FCDC’s Density Study<sup>1</sup>. The densities range from 0.89 to 29.82 pcf, with an overall average density of 6.73 pcf. As shown in the graph on the following page, the densities are right-skewed but distributed throughout the range.

<sup>1</sup> The Density Study is part of an ongoing effort by the FCDC to collect information on actual shipments across all product categories handled by the LTL industry. Carriers that choose to participate in the Study periodically submit shipment data captured through their respective freight auditing programs. The FCDC uses verifiable data points, identified by NMFC item, that include the weight and the dimensions and/or cube of the shipping unit.

SUBJECT 15



**Handling, Stowability and Liability**—There have been no reports of unusual or significant handling, stowability or liability concerns.

**Conclusion**

Based on the foregoing analysis, items 69320, 69340, 69350, 69360, 69370, 69380, 69390, 69400, 69414 and 69480 would be canceled with reference to the full-scale, density-based provisions of item 69420, and item 69460 would be canceled with reference to the full-scale, density-based provisions of item 164390<sup>2</sup>. The “viz.” listings in both items 69420 and 164390 would be amended accordingly for clarification and simplification.

Additionally, Note, item 69422 would be amended to include “mantels.”

References to Packages 1F, 2F, 3F, 5F, 21F and 22F would be removed from item 69420, and Note, item 69423 would be canceled with no further application, pursuant to the recommendation of the FCDC’s Packaging Manager.

Notes, items 69372 and 69482 would be canceled with no further application.

<sup>2</sup> Items 69420 and 164390 both provide the FCDC’s standard 11-subprovision density scale, which includes reference to Item (Rule) 170, the inadvertence clause.