

SUBJECT 23

Re: Parts, chair or stool — Item 83340

Contact: Angela L. Li Telephone — (703) 838-1882 angela.li@nmfta.org

Proponent: Freight Classification Development Council

Present Classification Provisions

Item	Description	Class
	FURNITURE PARTS GROUP: subject to item 82750	
83270	Furniture Parts , NOI, in boxes or crates, subject to Item 170 and having a density in pounds per cubic foot of:	
Sub 1	Less than 1	400
Sub 2	1 but less than 2	300
Sub 3	2 but less than 4	250
Sub 4	4 but less than 6	175
Sub 5	6 but less than 8	125
Sub 6	8 but less than 10	100
Sub 7	10 but less than 12	92.5
Sub 8	12 but less than 15	85
Sub 9	15 but less than 22.5	70
Sub 10	22.5 but less than 30	65
Sub 11	30 or greater	60
83340	Parts , chair or stool, wooden, finished, see Note, item 83342, in Package 19F	70
83342	NOTE—Applies only on packages containing a mixture of two or more of the following, not assembled to each other: backs, spindles, arms, legs, stretchers or runners.	

Proposed Classification Provisions

Item	Description	Class
	FURNITURE PARTS GROUP: subject to item 82750	
83270	Furniture Parts , NOI, in boxes or crates, subject to Item 170 and having a density in pounds per cubic foot of:	
Sub 1	Less than 1	400
Sub 2	1 but less than 2	300
Sub 3	2 but less than 4	250
Sub 4	4 but less than 6	175
Sub 5	6 but less than 8	125
Sub 6	8 but less than 10	100
Sub 7	10 but less than 12	92.5
Sub 8	12 but less than 15	85
Sub 9	15 but less than 22.5	70
Sub 10	22.5 but less than 30	65
Sub 11	30 or greater	60

SUBJECT 23

Proposed Classification Provisions — Concluded

Item	Description	Class
83340	FURNITURE PARTS GROUP: subject to item 82750 Parts, chair or stool, wooden, finished, etc	⇒Cancel; see item 83270
83342	NOTE—⇒Cancel; no further application.	

Analysis

Introduction

This proposal is in response to indications that shipments of chair or stool parts, as named in item 83340, exhibit transportation characteristics inconsistent with the currently assigned class 70. This item applies on mixed packages of specific chair or stool parts; most mixed package or mixed shipment provisions have been removed from the NMFC.

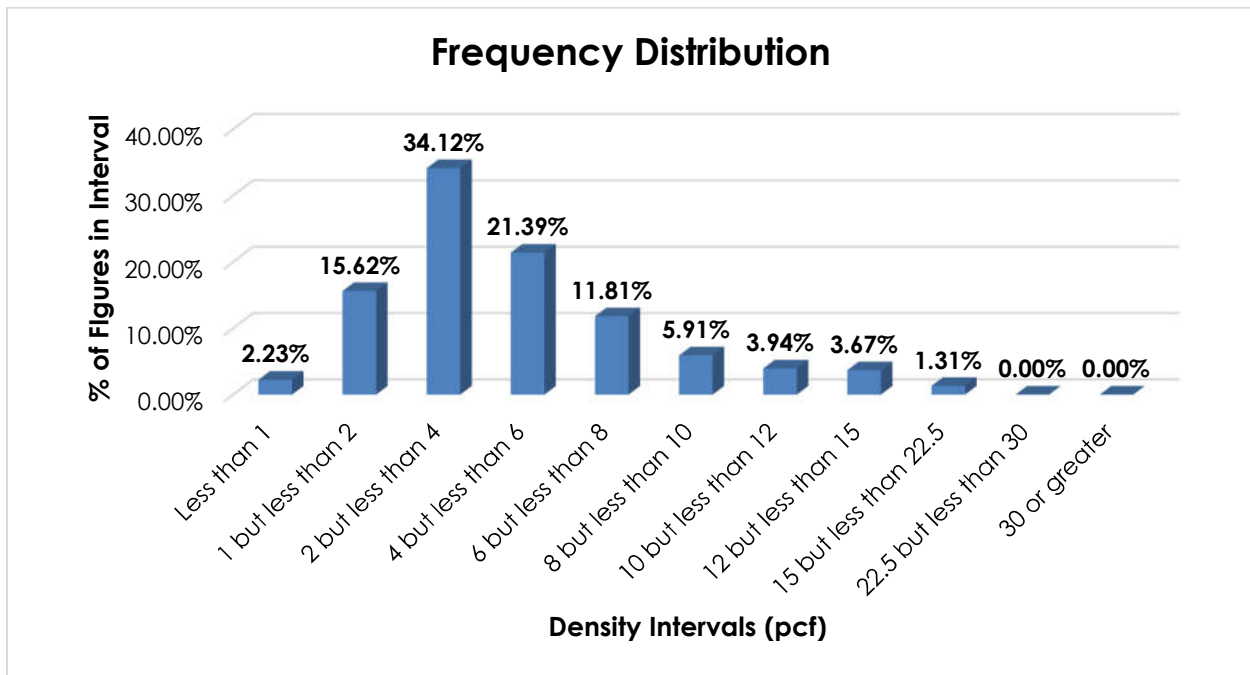
Transportation Characteristics

Density—The information of record includes 761 density observations obtained from the FCDC's Density Study¹. The densities range from 0.16 to 17.10 pcf with an overall average density of 4.74 pcf. As shown in the graph on the following page, the densities are right skewed.

THIS SPACE INTENTIONALLY LEFT BLANK

¹ The Density Study is part of an ongoing effort by the FCDC to collect information on actual shipments across all product categories handled by the LTL industry. Carriers that choose to participate in the Study periodically submit shipment data captured through their respective freight auditing programs. The FCDC uses verifiable data points, identified by NMFC item, that include the weight and the dimensions and/or cube of the shipping unit.

SUBJECT 23



Handling, Stowability and Liability—There have been no reports of unusual or significant handling, stowability or liability concerns.

Conclusion

Based on the foregoing analysis, item 83340 would be canceled with reference to the full-scale density-based provisions of item 83270².

² Item 83270 provides the FCDC's standard 11-subprovision density scale, which includes reference to Item (Rule) 170, the inadvertence clause.